
Product Datasheet

Cleaved-Caspase-2 p18 (G170) antibody (orb763891)

Description

Rabbit polyclonal antibody to Cleaved-Caspase-2



Western Blot analysis of various cells u...

Species/Host

Rabbit

Reactivity

Human, Mouse, Rat

Conjugation

Unconjugated

Tested Applications

ELISA, WB

Immunogen

The antiserum was produced against synthesized peptide derived from human Caspase 2. AA range:151-200

Preservatives

PBS with 0.02% sodium azide and 50% glycerol pH 7.4.

Concentration

1 mg/ml

Storage

Maintain refrigerated at 2-8°C for up to 2 weeks. For long term storage store at -20°C in small aliquots to prevent freeze-thaw cycles.

Note

For research use only

Isotype

IgG

Clonality

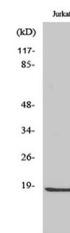
Polyclonal

MW

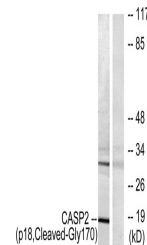
18 or 35

Expiration Date

12 months from date of receipt.



Western Blot analysis of Jurkat cells us...



Western blot analysis of lysates from Ju...