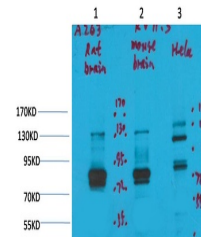


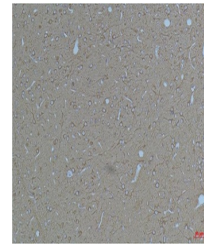
Product Datasheet

Kv11.3 antibody (orb763828)

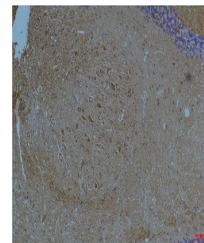
Description	Rabbit polyclonal antibody to Kv11.3
Reactivity	Human, Mouse, Rat
Conjugation	Unconjugated
Tested Applications	IHC, WB
Immunogen	Synthetic Peptide
Preservatives	PBS with 0.02% sodium azide and 50% glycerol pH 7.4.
Concentration	1mg/mL
Storage	Maintain refrigerated at 2-8°C for up to 2 weeks. For long term storage store at -20°C in small aliquots to prevent freeze-thaw cycles.
Note	For research use only
Isotype	IgG
Clonality	Polyclonal
Source	Rabbit
MW	83135kDa
Uniprot ID	Q9NS40
Dilution Range	WB 1:1,000-2,000 IHC 1:100-200
Expiration Date	12 months from date of receipt.



Western blot analysis of 1) Rat Brain Ti...



Immunohistochemical analysis of paraffin...



Immunohistochemical analysis of paraffin...