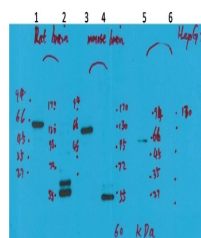


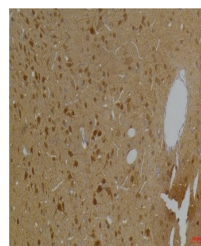
## Product Datasheet

### Kv10.2 antibody (orb763826)

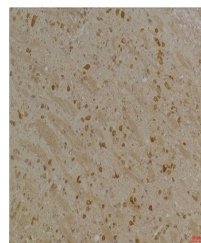
<b>Description</b>	Rabbit polyclonal antibody to Kv10.2
<b>Reactivity</b>	Human, Mouse, Rat
<b>Conjugation</b>	Unconjugated
<b>Tested Applications</b>	IHC, WB
<b>Immunogen</b>	Synthetic Peptide
<b>Preservatives</b>	PBS with 0.02% sodium azide and 50% glycerol pH 7.4.
<b>Concentration</b>	1mg/mL
<b>Storage</b>	Maintain refrigerated at 2-8°C for up to 2 weeks. For long term storage store at -20°C in small aliquots to prevent freeze-thaw cycles.
<b>Note</b>	For research use only
<b>Isotype</b>	IgG
<b>Clonality</b>	Polyclonal
<b>Source</b>	Rabbit
<b>MW</b>	60kDa
<b>Uniprot ID</b>	<b>Q8NCM2</b>
<b>Dilution Range</b>	WB 1:1000-2000 IHC 1:100-200
<b>Expiration Date</b>	12 months from date of receipt.



Western blot analysis of 1) Rat Brain Ti...



Immunohistochemical analysis of paraffin...



Immunohistochemical analysis of paraffin...