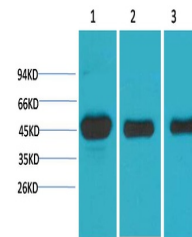


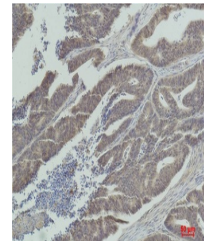
Product Datasheet

MEK1 antibody (orb763740)

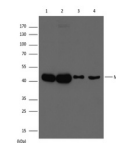
Description	Rabbit polyclonal antibody to MEK1
Species/Host	Rabbit
Reactivity	Human, Mouse, Rat
Conjugation	Unconjugated
Tested Applications	IHC, WB
Immunogen	Recombinant Protein
Preservatives	PBS with 0.02% sodium azide and 50% glycerol pH 7.4.
Concentration	1mg/ml
Storage	Maintain refrigerated at 2-8°C for up to 2 weeks. For long term storage store at -20°C in small aliquots to prevent freeze-thaw cycles.
Note	For research use only
Isotype	IgG
Clonality	Polyclonal
MW	45kDa
Uniprot ID	Q02750
Dilution Range	WB 1:1,000-2,000 IHC 1:100-200
Expiration Date	12 months from date of receipt.



Western blot analysis of 1) HeLa, 2) 3T3...



Immunohistochemical analysis of paraffin...



Western blot analysis of extracts from M...