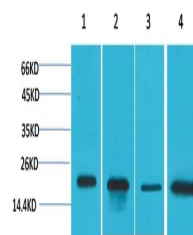


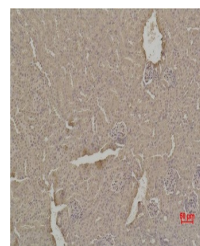
Product Datasheet

SOD1 antibody (orb763726)

Description	Rabbit polyclonal antibody to SOD1
Species/Host	Rabbit
Reactivity	Human, Mouse, Rat
Conjugation	Unconjugated
Tested Applications	IHC, WB
Immunogen	Recombinant Protein
Preservatives	PBS with 0.02% sodium azide and 50% glycerol pH 7.4.
Concentration	1mg/ml
Storage	Store at -20°C. Avoid repeated freeze-thaw cycles.
Note	For research use only
Isotype	IgG
Clonality	Polyclonal
MW	18kDa
Uniprot ID	P00441
Dilution Range	WB 1:2,000-5,000 IHC 1:200-500
Expiration Date	12 months from date of receipt.



Western blot analysis of 1) HeLa, 2) MCF...



Immunohistochemical analysis of paraffin...