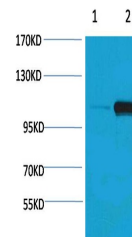


Product Datasheet

PEPC (Phospho-Ser15) antibody (orb763686)

Description	Rabbit polyclonal antibody to PEPC (Phospho-Ser15)
Species/Host	Rabbit
Conjugation	Unconjugated
Tested Applications	WB
Immunogen	Synthetic Peptide
Preservatives	PBS with 0.02% sodium azide and 50% glycerol pH 7.4.
Concentration	1mg/ml
Storage	Maintain refrigerated at 2-8°C for up to 2 weeks. For long term storage store at -20°C in small aliquots to prevent freeze-thaw cycles.
Note	For research use only
Isotype	IgG
Clonality	Polyclonal
MW	105-110kDa
Uniprot ID	P20142
Dilution Range	WB 1:1,000-2,000
Expiration Date	12 months from date of receipt.



Western blot analysis of Maize 1) Dark, ...