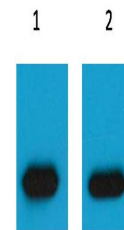


Product Datasheet

mCherry-Tag antibody (orb763630)

| | |
|----------------------------|------------------------------------------------------|
| Description | Mouse polyclonal antibody to mCherry-Tag |
| Species/Host | Mouse |
| Conjugation | Unconjugated |
| Tested Applications | IF, IP, WB |
| Immunogen | Recombinant Protein |
| Preservatives | PBS with 0.02% sodium azide and 50% glycerol pH 7.4. |
| Concentration | 1mg/ml |
| Storage | Store at -20°C. Avoid repeated freeze-thaw cycles. |
| Note | For research use only |
| Isotype | IgG |
| Clonality | Polyclonal |
| Dilution Range | WB 1:5,000 IF 1:200 IHC 1:200 IP 1:100 |
| Expiration Date | 12 months from date of receipt. |



Western blot analysis of mCherry Recombi...