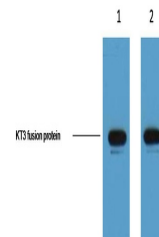


Product Datasheet

KT3-Tag antibody (orb763383)

| | |
|----------------------------|---|
| Description | Mouse monoclonal antibody to KT3-Tag |
| Species/Host | Mouse |
| Conjugation | Unconjugated |
| Tested Applications | WB |
| Immunogen | Synthetic Peptide |
| Preservatives | PBS with 0.02% sodium azide and 50% glycerol pH 7.4. Store at -20°C. Avoid repeated freeze-thaw cycles. |
| Concentration | 1mg/ml |
| Storage | Maintain refrigerated at 2-8°C for up to 2 weeks. For long term storage store at -20°C in small aliquots to prevent freeze-thaw cycles. |
| Note | For research use only |
| Isotype | IgG1 |
| Clonality | Monoclonal |
| Dilution Range | WB 1:5,000 |
| Expiration Date | 12 months from date of receipt. |



1ug KT3 fusion protein + Primary antibody...