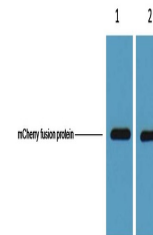


## Product Datasheet

### mCherry-Tag antibody (orb763378)

<b>Description</b>	Mouse monoclonal antibody to mCherry-Tag
<b>Species/Host</b>	Mouse
<b>Conjugation</b>	Unconjugated
<b>Tested Applications</b>	WB
<b>Immunogen</b>	Recombinant Protein
<b>Preservatives</b>	PBS with 0.02% sodium azide and 50% glycerol pH 7.4. Store at -20°C. Avoid repeated freeze-thaw cycles.
<b>Concentration</b>	1mg/ml
<b>Storage</b>	Maintain refrigerated at 2-8°C for up to 2 weeks. For long term storage store at -20°C in small aliquots to prevent freeze-thaw cycles.
<b>Note</b>	For research use only
<b>Isotype</b>	IgG1
<b>Clonality</b>	Monoclonal
<b>Dilution Range</b>	WB 1:5,000 IF 1:200
<b>Expiration Date</b>	12 months from date of receipt.



1µg mCherry fusion protein + Primary ant...