

Product Datasheet

Anti-mCherry purified (orb763362)

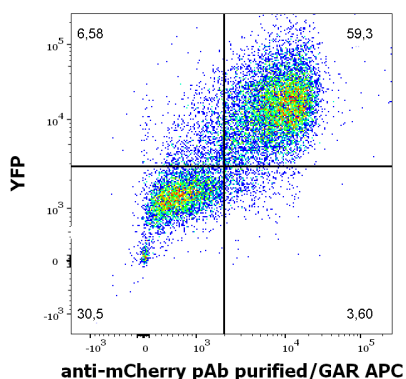
Description	Rabbit polyclonal antibody to mCherry
Conjugation	Unconjugated
Tested Applications	FC, ICC, WB
Immunogen	mCherry protein from Anaplasma marginale
Target	mCherry
Preservatives	Phosphate buffered saline (PBS), pH 7.4, 15 mM sodium azide
Concentration	1 mg/ml
Storage	Maintain refrigerated at 2-8°C for up to 2 weeks. For long term storage store at -20°C in small aliquots to prevent freeze-thaw cycles.
Note	For research use only
Application notes	Flow cytometry: Recommended dilution: 1-4 µg/ml, extracellular staining or intracellular staining - depending on expression. Western blotting: Recommended dilution: 1-2 µg/ml.
Isotype	Rabbit polyclonal
Clonality	Monoclonal
Clone Number	PAb (918)
Purity	Purified by ligand affinity chromatography.
Uniprot ID	X5DSL3
Dilution Range	FC: 1-4 µg/ml, WB: 1-2 µg/ml
Expiration Date	12 months from date of receipt.

Biorbyt Ltd.

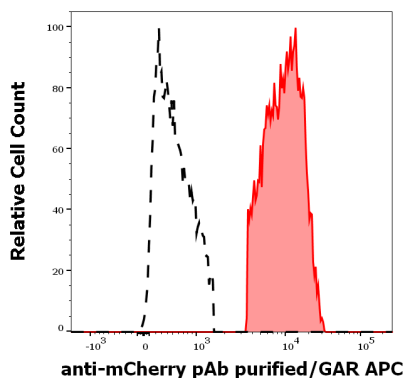
7 Signet Court, Swann's Road,
Cambridge, CB5 8LA, United Kingdom
Email: info@biorbyt.com, support@biorbyt.com
Phone: [+44 \(0\) 1223 859-353](tel:+44(0)1223859353) | Fax: [+1 \(415\) 651-8558](tel:+1(415)6518558)

Biorbyt LLC.

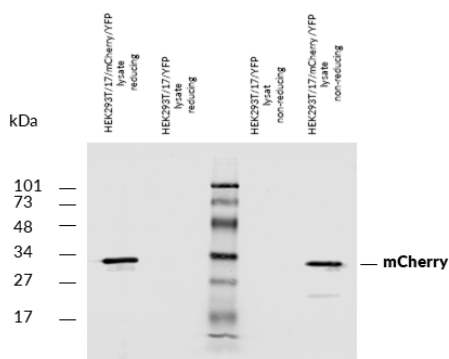
68 TW Alexander Drive,
Durham, NC, 27713, United States
Email: info@biorbyt.com, support@biorbyt.com
Phone: [+1 \(415\) 906-5211](tel:+1(415)9065211) | Fax: [+1 \(415\) 651-8558](tel:+1(415)6518558)



Flow cytometry surface staining pattern of HEK293T/17 cells co-transfected with mCherry/GPI and YFP/GPI constructs stained using anti-mCherry Purified rabbit polyclonal antibody (concentration in sample 2 $\mu\text{g/ml}$, GAR APC).



Separation of HEK293T/17 cells co-transfected with mCherry/GPI and YFP/GPI constructs stained anti-mCherry Purified rabbit polyclonal antibody (concentration in sample 2 $\mu\text{g/ml}$, GAR APC, red-filled) from HEK293T/17 cells co-transfected with mCherry/GPI and YFP/GPI constructs unstained by primary polyclonal antibody (GAR APC, black-dashed) in flow cytometry analysis (surface staining) of HEK293T17/mCherry/YFP cell suspension.



Western blotting analysis of mCherry fluorescent protein using rabbit polyclonal PAb (918) on lysates of HEK293T/17 cells co-transfected with mCherry/GPI and YFP/GPI constructs (HEK293T/17 cells transfected with YFP/GPI; negative control) under reducing and non-reducing conditions. Nitrocellulose membrane was probed with 2 $\mu\text{g/ml}$ of rabbit anti-mCherry polyclonal antibody followed by IRDye800-conjugated anti-rabbit secondary antibody. A specific band was detected for mCherry protein at approximately 30 kDa.

Biorbyt Ltd.

7 Signet Court, Swann's Road,
Cambridge, CB5 8LA, United Kingdom
Email: info@biorbyt.com, support@biorbyt.com
Phone: [+44 \(0\) 1223 859-353](tel:+44(0)1223859353) | Fax: [+1 \(415\) 651-8558](tel:+1(415)6518558)

Biorbyt LLC.

68 TW Alexander Drive,
Durham, NC, 27713, United States
Email: info@biorbyt.com, support@biorbyt.com
Phone: [+1 \(415\) 906-5211](tel:+1(415)9065211) | Fax: [+1 \(415\) 651-8558](tel:+1(415)6518558)