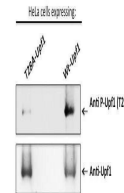


Product Datasheet

BRCA2 (phospho-Ser3291) antibody (orb7633)

Description	Rabbit monoclonal antibody to BRCA2 (phospho-Ser3291)
Species/Host	Rabbit
Reactivity	Human
Conjugation	Unconjugated
Tested Applications	ELISA, IB, WB
Immunogen	Synthetic peptide linked to KLH
Target	BRCA2 (pSer3291)
Preservatives	Purified antibody containing PBS + 0.09% sodium azide
Concentration	0.36mg/ml
Note	For research use only
Clonality	Monoclonal
Uniprot ID	p51587
Entrez	675
Dilution Range	Optimal antibody dilution should be determined by titration, however as a guideline start at 1ug/ml for western blot
Expiration Date	12 months from date of receipt.



Western blot analysis of BRCA2 (phospho-Ser3291) antibody using BRCA2 (phospho-Ser3291) antibody.