

---

## Product Datasheet

### Cyclophilin E/PPIE Antibody (monoclonal, 7F2) (orb763199)

**Description**

Cyclophilin E/PPIE Antibody (monoclonal, 7F2)

**Species/Host**

Mouse

**Reactivity**

Human, Mouse, Rat

**Conjugation**

Unconjugated

**Tested Applications**

FC, ICC, IF, IHC, WB

**Immunogen**

E.coli-derived human Cyclophilin E/PPIE recombinant protein (Position: M1-V301).

**Form/Appearance**

Lyophilized

**Concentration**

Adding 0.2 ml of distilled water will yield a concentration of 500 µg/ml.

**Storage**

Maintain refrigerated at 2-8°C for up to 2 weeks. For long term storage store at -20°C in small aliquots to prevent freeze-thaw cycles.

**Note**

For research use only

**Application notes**

Tested Species: In-house tested species with positive results. Other applications have not been tested. Optimal dilutions should be determined by end users. Adding 0.2 ml of distilled water will yield a concentration of 500 µg/ml.

**Isotype**

Mouse IgG2a

**Clonality**

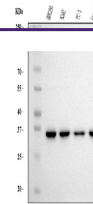
Monoclonal

**MW**

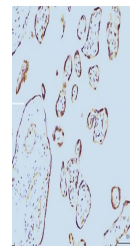
35 kDa

**Uniprot ID**
[Q9UNP9](#)
**Expiration Date**

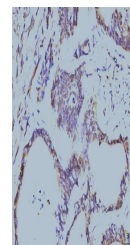
12 months from date of receipt.



Western blot analysis of Cyclophilin E/P...



IHC analysis of Cyclophilin E/PPIE using...



IHC analysis of Cyclophilin E/PPIE using...