
Product Datasheet

Paxillin/PXN Antibody (orb76317)

Description

Paxillin/PXN Antibody

Species/Host

Rabbit

Reactivity

Human, Mouse, Rat

Conjugation

Unconjugated

Tested

FC, ICC, IF, IHC, IHC-Fr, WB

Applications
Immunogen

A synthetic peptide corresponding to a sequence at the C-terminal of human Paxillin (456-472aa HEKDGKAYCRKDYFDMF), identical to the related mouse and rat sequences.

Form/Appearance

Lyophilized

Concentration

Adding 0.2 ml of distilled water will yield a concentration of 500 µg/ml.

Storage

Store at -20°C for one year from date of receipt. After reconstitution, at 4°C for one month. It can also be aliquotted and stored frozen at -20°C for six months. Avoid repeated freeze-thaw cycles.

Note

For research use only

Application notes

Tested Species: In-house tested species with positive results. Predicted Species: Species predicted to be fit for the product based on sequence similarities. By Heat: Boiling the paraffin sections in 10mM citrate buffer, pH6.0, for 20mins is required for the staining of formalin/paraffin sections. Other applications have not been tested. Optimal dilutions should be determined by end users. . Add 0.2ml of distilled water will yield a concentration of 500ug/ml.

Isotype

Rabbit IgG

Clonality

Polyclonal

MW

64505 MW

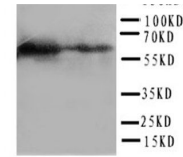
Uniprot ID
P49023
Dilution Range

Western blot, 0.1-0.5µg/ml, Human Immunohistochemistry (Paraffin-embedded Section), 0.5-1µg/ml, Human, By Heat Immunohistochemistry (Frozen Section), 0.5-1µg/ml, Rat Immunocytochemistry , 0.5-1µg/ml, Human Immunocytochemistry/Immunofluorescence, 5µg/ml, Human Immunofluorescence, 5µg/ml, Human Flow Cytometry, 1-3µg/1x10⁶ cells, Human

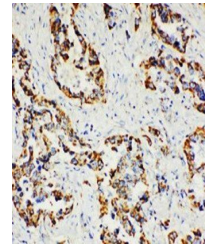
Expiration Date

12 months from date of receipt.

1 2 3 4 5 — 250KD



Western blot analysis of Lane 1: 293T Ce...



Immunohistochemical analysis of formalin...

