
Product Datasheet

**CD13/ANPEP Antibody (monoclonal, 7F2)
(orb763148)**

Description

CD13/ANPEP Antibody (monoclonal, 7F2)

Species/Host

Mouse

Reactivity

Human, Monkey, Rat

Conjugation

Unconjugated

Tested Applications

IHC, WB

Immunogen

E.coli-derived human CD13/ANPEP recombinant protein (Position: D148-S966).

Form/Appearance

Lyophilized

Concentration

Adding 0.2 ml of distilled water will yield a concentration of 500 µg/ml.

Storage

Maintain refrigerated at 2-8°C for up to 2 weeks. For long term storage store at -20°C in small aliquots to prevent freeze-thaw cycles.

Note

For research use only

Application notes

Tested Species: In-house tested species with positive results. Other applications have not been tested. Optimal dilutions should be determined by end users. Adding 0.2 ml of distilled water will yield a concentration of 500 µg/ml.

Isotype

Mouse IgG1

Clonality

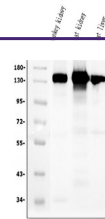
Monoclonal

MW

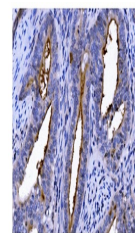
150 kDa

Uniprot ID
[P15144](#)
Expiration Date

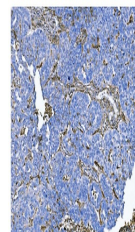
12 months from date of receipt.



Western blot analysis of CD13/ANPEP using anti-CD13/ANPEP antibody.



IHC analysis of CD13/ANPEP using anti-CD13/ANPEP antibody.



IHC analysis of CD13/ANPEP using anti-CD13/ANPEP antibody.