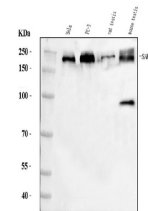


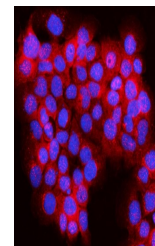
Product Datasheet

JLP/SPAG9 Antibody (orb763145)

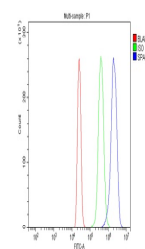
Description	JLP/SPAG9 Antibody
Species/Host	Rabbit
Reactivity	Human, Mouse, Rat
Conjugation	Unconjugated
Tested Applications	ELISA, FC, ICC, IF, WB
Immunogen	E.coli-derived human JLP/SPAG9 recombinant protein (Position: A281-K964).
Form/Appearance	Lyophilized
Concentration	Adding 0.2 ml of distilled water will yield a concentration of 500 µg/ml.
Storage	Maintain refrigerated at 2-8°C for up to 2 weeks. For long term storage store at -20°C in small aliquots to prevent freeze-thaw cycles.
Note	For research use only
Application notes	Tested Species: In-house tested species with positive results. Other applications have not been tested. Optimal dilutions should be determined by end users. Adding 0.2 ml of distilled water will yield a concentration of 500 µg/ml.
Isotype	Rabbit IgG
Clonality	Polyclonal
MW	190 kDa
Uniprot ID	O60271
Expiration Date	12 months from date of receipt.



Western blot analysis of JLP/SPAG9 using...



IF analysis of JLP/SPAG9 using anti-JLP/...



Flow Cytometry analysis of HL-60 cells u...