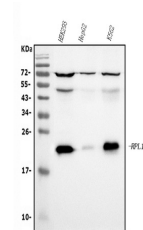


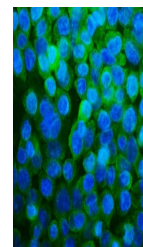
Product Datasheet

RPL13A Antibody (monoclonal, 4C9) (orb763102)

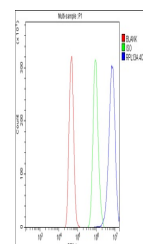
Description	RPL13A Antibody (monoclonal, 4C9)
Species/Host	Mouse
Reactivity	Human
Conjugation	Unconjugated
Tested Applications	FC, ICC, IF, WB
Immunogen	E.coli-derived human RPL13A recombinant protein (Position:A2-V203).
Form/Appearance	Lyophilized
Concentration	Adding 0.2 ml of distilled water will yield a concentration of 500 µg/ml.
Storage	Store at -20°C for one year from date of receipt. After reconstitution, at 4°C for one month. It can also be aliquotted and stored frozen at -20°C for six months. Avoid repeated freeze-thaw cycles.
Note	For research use only
Application notes	Tested Species: In-house tested species with positive results. Other applications have not been tested. Optimal dilutions should be determined by end users. Add 0.2ml of distilled water will yield a concentration of 500ug/ml.
Isotype	Mouse IgG2a
Clonality	Monoclonal
MW	24 kDa
Uniprot ID	P40429
Expiration Date	12 months from date of receipt.



Western blot analysis of RPL13A using an...



IF analysis of RPL13A using anti-RPL13A ...



Flow Cytometry analysis of A431 cells us...