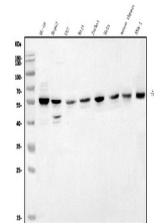


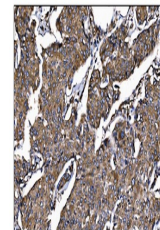
Product Datasheet

POGLUT1 Antibody (orb763069)

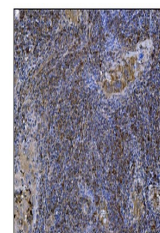
Description	POGLUT1 Antibody
Species/Host	Rabbit
Reactivity	Human, Mouse
Conjugation	Unconjugated
Tested Applications	ICC, IF, IHC, WB
Immunogen	A synthetic peptide corresponding to a sequence of human POGLUT1 (KTDLSNVQELLQFVKANDDVAQEIAER).
Form/Appearance	Lyophilized
Concentration	Adding 0.2 ml of distilled water will yield a concentration of 500 µg/ml.
Storage	Store at -20°C for one year from date of receipt. After reconstitution, at 4°C for one month. It can also be aliquotted and stored frozen at -20°C for six months. Avoid repeated freeze-thaw cycles.
Note	For research use only
Application notes	Tested Species: In-house tested species with positive results. Other applications have not been tested. Optimal dilutions should be determined by end users. Add 0.2ml of distilled water will yield a concentration of 500ug/ml.
Isotype	Rabbit IgG
Clonality	Polyclonal
MW	55 kDa
Uniprot ID	Q8NBL1
Expiration Date	12 months from date of receipt.



Western blot analysis of POGLUT1 using a...



IHC analysis of POGLUT1 using anti-POGLU...



IHC analysis of POGLUT1 using anti-POGLU...