

---

## Product Datasheet

### Sodium/bile acid cotransporter SLC10A1 Antibody (orb76184)

**Description**

Sodium/bile acid cotransporter SLC10A1

**Species/Host**

Rabbit

**Reactivity**

Human, Mouse, Rat

**Conjugation**

Unconjugated

**Tested Applications**

IHC, WB

**Immunogen**

A synthetic peptide corresponding to a sequence in the middle region of human SLC10A1 (141-154aa YSRGIYDGLKDKV), different from the related rat and mouse sequences by one amino acid.

**Form/Appearance**

Lyophilized

**Concentration**

Adding 0.2 ml of distilled water will yield a concentration of 500 µg/ml.

**Storage**

Store at -20°C for one year from date of receipt. After reconstitution, at 4°C for one month. It can also be aliquotted and stored frozen at -20°C for six months. Avoid repeated freeze-thaw cycles.

**Note**

For research use only

**Application notes**

Tested Species: In-house tested species with positive results. Predicted Species: Species predicted to be fit for the product based on sequence similarities. By Heat: Boiling the paraffin sections in 10mM citrate buffer, pH6.0, for 20mins is required for the staining of formalin/paraffin sections. Other applications have not been tested. Optimal dilutions should be determined by end users. . Add 0.2ml of distilled water will yield a concentration of 500ug/ml.

**Isotype**

Rabbit IgG

**Clonality**

Polyclonal

**MW**

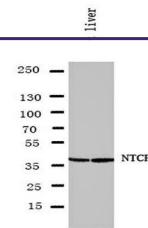
38119 MW

**Uniprot ID**
[Q14973](https://www.uniprot.org/uniprot/Q14973)
**Sensitivity**

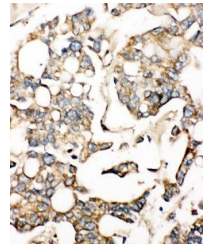
10pg/ml

**Dilution Range**

Immunohistochemistry (Paraffin-embedded Section), 0.5-1µg/ml, Human, Rat, Mouse, By Heat Western blot, 0.1-0.5µg/ml, Rat, Human,



Western blot analysis of Rat Liver Tissue...



Immunohistochemical analysis of formalin...