

---

## Product Datasheet

### Indoleamine 2, 3-dioxygenase/IDO1 Antibody (orb76125)

**Description**

Indoleamine 2, 3-dioxygenase/IDO1 Antibody

**Species/Host**

Rabbit

**Reactivity**

Human

**Conjugation**

Unconjugated

**Tested**

WB

**Applications**
**Immunogen**

A synthetic peptide corresponding to a sequence at the N-terminus of human IDO1 (1-20aa MAHAMENSWTISKYHIDEE).

**Form/Appearance**

Lyophilized

**Concentration**

Adding 0.2 ml of distilled water will yield a concentration of 500 µg/ml.

**Storage**

Store at -20°C for one year from date of receipt. After reconstitution, at 4°C for one month. It can also be aliquotted and stored frozen at -20°C for six months. Avoid repeated freeze-thaw cycles.

**Note**

For research use only

**Application notes**

Tested Species: In-house tested species with positive results. Predicted Species: Species predicted to be fit for the product based on sequence similarities. Other applications have not been tested. Optimal dilutions should be determined by end users. . Add 0.2ml of distilled water will yield a concentration of 500ug/ml.

**Isotype**

Rabbit IgG

**Clonality**

Polyclonal

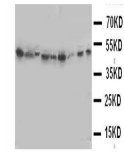
**MW**

45326 MW

**Uniprot ID**
[P14902](#)
**Expiration Date**

12 months from date of receipt.

1 2 3 4 5 6 7 8 9 - 130KD



Western blot analysis of Lane 1: SMMC Ce...