

Product Datasheet

Anti-CD40 [chi220] (orb758982)

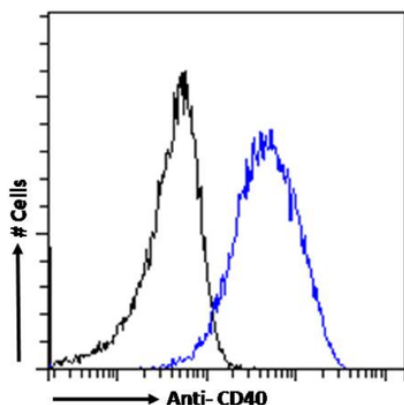
Description	Rabbit monoclonal antibody to CD40
Species/Host	Mouse
Reactivity	Human
Conjugation	Unconjugated
Tested Applications	Blocking
Immunogen	This antibody was generated by immunizing female BALB/c mice with a fusion protein containing extracellular domain of human CD40 fused to the hinge CH2 and CH3 domains of a murine IgG2b antibody.
Target	CD40
Preservatives	PBS with 0.02% Proclin 300.
Concentration	1 mg/ml
Storage	Maintain refrigerated at 2-8°C for up to 2 weeks. For long term storage store at -20°C in small aliquots to prevent freeze-thaw cycles.
Note	For research use only
Isotype	Mouse IgG
Clonality	Monoclonal
Clone Number	chi220
Purity	Purified
Uniprot ID	P29965
Expiration Date	12 months from date of receipt.

Biorbyt Ltd.

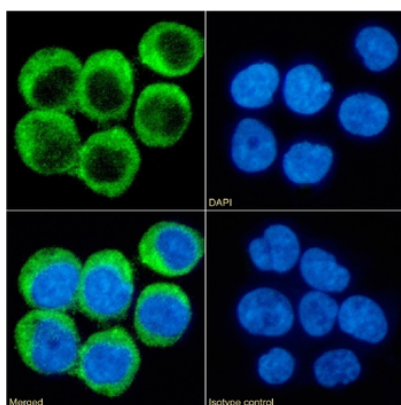
7 Signet Court, Swann's Road,
Cambridge, CB5 8LA, United Kingdom
Email: info@biorbyt.com, support@biorbyt.com
Phone: [+44 \(0\) 1223 859-353](tel:+44(0)1223859353) | Fax: [+1 \(415\) 651-8558](tel:+1(415)6518558)

Biorbyt LLC.

68 TW Alexander Drive,
Durham, NC, 27713, United States
Email: info@biorbyt.com, support@biorbyt.com
Phone: [+1 \(415\) 906-5211](tel:+1(415)9065211) | Fax: [+1 \(415\) 651-8558](tel:+1(415)6518558)



Flow cytometry using the anti-CD40 antibody chi220. Daudi cells were fixed using 2% PFA and stained with anti-unknown specificity antibody (orb256458; isotype control, black line) or the rabbit IgG1 version of chi220 (orb758982, blue line) at a dilution of 1:100 for 1h at RT. After washing, the bound antibody was detected using a goat anti-rabbit IgG AlexaFluor® 488 antibody at a dilution of 1:1000 and cells analyzed using a FACSCanto flow-cytometer.



Immunofluorescence staining of fixed Daudi cells with anti-CD40 antibody chi220. Immunofluorescence analysis of paraformaldehyde fixed Daudi cells on Shi-fix™ coverslips stained with the chimeric rabbit IgG version of chi220 (orb758982) at 10 µg/ml for 1h followed by Alexa Fluor® 488 secondary antibody (2 µg/ml), showing membrane staining. The nuclear stain is DAPI (blue). Panels show from left-right, top-bottom orb758982, DAPI, merged channels and an isotype control. The isotype control was an unknown specificity antibody (orb256458) followed by staining with Alexa Fluor® 488 secondary antibody.

Biorbyt Ltd.

7 Signet Court, Swann's Road,
Cambridge, CB5 8LA, United Kingdom
Email: info@biorbyt.com, support@biorbyt.com
Phone: [+44 \(0\) 1223 859-353](tel:+44(0)1223859353) | Fax: [+1 \(415\) 651-8558](tel:+1(415)6518558)

Biorbyt LLC.

68 TW Alexander Drive,
Durham, NC, 27713, United States
Email: info@biorbyt.com, support@biorbyt.com
Phone: [+1 \(415\) 906-5211](tel:+1(415)9065211) | Fax: [+1 \(415\) 651-8558](tel:+1(415)6518558)