

Product Datasheet

Anti-IgM [M15/8] (orb758768)

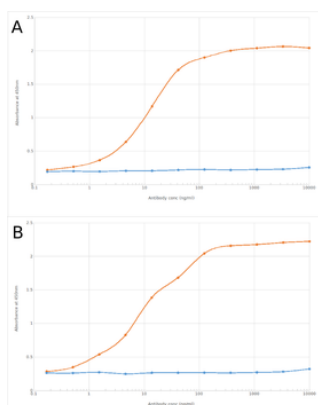
Description	Mouse monoclonal antibody to IgM
Species/Host	Mouse
Reactivity	Human
Conjugation	Unconjugated
Tested Applications	Blocking, ELISA, FC, IHC-Fr, IP
Immunogen	BALB/c mice immunized with human IgM.
Target	IgM
Preservatives	PBS with 0.02% Proclin 300.
Concentration	1 mg/ml
Storage	Maintain refrigerated at 2-8°C for up to 2 weeks. For long term storage store at -20°C in small aliquots to prevent freeze-thaw cycles.
Note	For research use only
Isotype	IgG1
Clonality	Monoclonal
Clone Number	M15/8
Purity	Purified
Uniprot ID	P01871
Expiration Date	12 months from date of receipt.

Biorbyt Ltd.

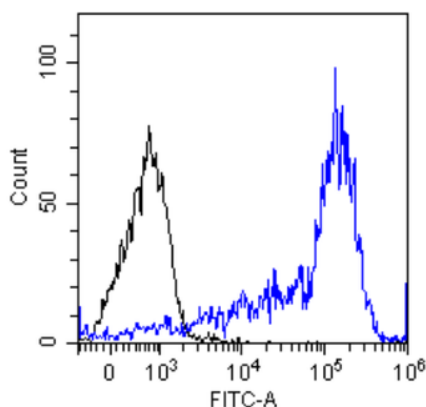
7 Signet Court, Swann's Road,
Cambridge, CB5 8LA, United Kingdom
Email: info@biorbyt.com, support@biorbyt.com
Phone: [+44 \(0\) 1223 859-353](tel:+44(0)1223859353) | Fax: [+1 \(415\) 651-8558](tel:+1(415)6518558)

Biorbyt LLC.

68 TW Alexander Drive,
Durham, NC, 27713, United States
Email: info@biorbyt.com, support@biorbyt.com
Phone: [+1 \(415\) 906-5211](tel:+1(415)9065211) | Fax: [+1 \(415\) 651-8558](tel:+1(415)6518558)



ELISA of anti-IgM antibody on IgM Fc region peptide and a murine IgM antibody. Binding curves of the rabbit chimeric version of the anti-IgM antibody M15/8 (orb758769; red line) and isotype control (anti-Fluorescein antibody; orb256390; blue line) to an ELISA plate coated with either IgM Fc region peptide at a concentration of 5 µg/ml (A) or murine IgM antibody (B; Anti-CD41 antibody) again at 5 µg/ml. A 3-fold serial dilution from 10000 to 0.17 ng/ml was performed using orb758769. For signal detection, a 1:4000 dilution of HRP-labelled anti-rabbit IgG1 antibody was used. Both IgM Fc region peptide (monomeric ligand) and murine IgM antibody (multimeric ligand) were recognised by orb758769.



Flow-cytometry using the anti-IgM M15/8 Daudi cells were stained with unimmunized rabbit IgG antibody (black line) or the rabbit-chimeric version of M15/8 (orb758769, blue line) at a concentration of 10 µg/ml for 30 mins at RT. After washing, bound antibody was detected using anti-rabbit IgG JK (FITC-conjugate) antibody (129936) at 2 µg/ml and cells analyzed on a FACSCanto flow-cytometer.



Western Blot using anti-IgM antibody M15/8 Human spleen lysate (35 µg protein in RIPA buffer) was resolved on a 10% SDS PAGE gel and blots probed with the chimeric rabbit version of M15/8 (orb758769) at 0.3 µg/ml before detection using an anti-rabbit secondary antibody. A primary incubation of 1h was used and protein was detected by chemiluminescence. The expected band size for IgM is 180/900kDa for monomeric/pentameric IgM respectively.

Biorbyt Ltd.

7 Signet Court, Swann's Road,
Cambridge, CB5 8LA, United Kingdom
Email: info@biorbyt.com, support@biorbyt.com
Phone: [+44 \(0\) 1223 859-353](tel:+44(0)1223859353) | Fax: [+1 \(415\) 651-8558](tel:+1(415)6518558)

Biorbyt LLC.

68 TW Alexander Drive,
Durham, NC, 27713, United States
Email: info@biorbyt.com, support@biorbyt.com
Phone: [+1 \(415\) 906-5211](tel:+1(415)9065211) | Fax: [+1 \(415\) 651-8558](tel:+1(415)6518558)