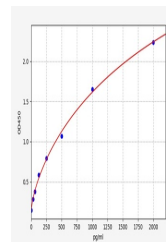


Product Datasheet

Human CRLF2 ELISA Kit (orb756761)

Description	Human CRLF2 (Cardiotrophin-like cytokine factor 2) ELISA Kit
Reactivity	Human
Range	31.25-2000pg/ml
Target	CRLF2
Storage	2-8 °C for 6 months
Note	For research use only
Uniprot ID	Q9HC73
Sensitivity	18.75pg/ml
Expiration Date	Please enquire.



Human CRLF2
(Cardiotrophin-
like cytokine...