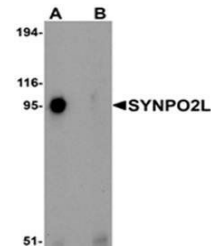


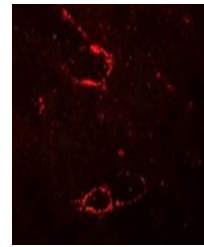
Product Datasheet

SYNPO2L Antibody (orb75525)

Description	SYNPO2L Antibody
Species/Host	Rabbit
Reactivity	Human, Mouse
Conjugation	Unconjugated
Tested Applications	ELISA, ICC, WB
Storage	Store at -20°C for long term preservation (recommended). Store at 4°C for short term use.
Note	For research use only
Clonality	Recombinant
Uniprot ID	Q9H987
Expiration Date	12 months from date of receipt.



Western blot analysis of human thymus ti...



Confocal immunofluorescence analysis of ...