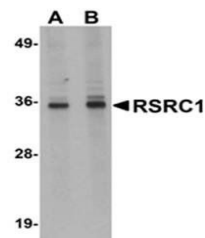


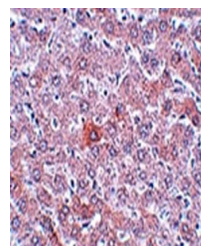
Product Datasheet

RSRC1 Antibody (orb75362)

| | |
|----------------------------|---|
| Description | RSRC1 Antibody |
| Species/Host | Rabbit |
| Reactivity | Human, Mouse, Rat |
| Conjugation | Unconjugated |
| Tested Applications | ELISA, IHC, WB |
| Storage | Store at -20°C for long term preservation (recommended). Store at 4°C for short term use. |
| Note | For research use only |
| Clonality | Recombinant |
| Uniprot ID | Q96IZ7 |
| Expiration Date | 12 months from date of receipt. |



Western blot analysis of HepG2 cell lysa...



Immunohistochemical analysis of formalin...