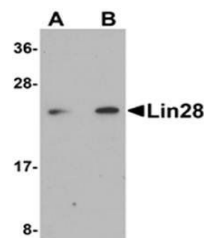


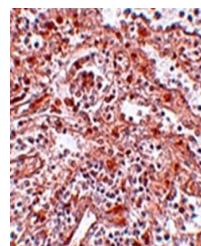
Product Datasheet

Lin28 Antibody (orb75361)

Description	Lin28 Antibody
Species/Host	Rabbit
Reactivity	Human
Conjugation	Unconjugated
Tested Applications	ELISA, IHC, WB
Storage	Store at -20°C for long term preservation (recommended). Store at 4°C for short term use.
Note	For research use only
Clonality	Recombinant
Uniprot ID	Q9H9Z2
Expiration Date	12 months from date of receipt.



Western blot analysis of Raji cell lysat...



Immunohistochemical analysis of formalin...