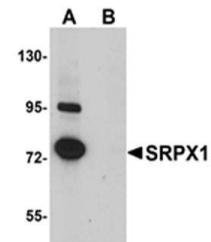


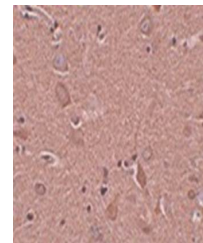
Product Datasheet

SRPX1 Antibody (orb75305)

Description	SRPX1 Antibody
Species/Host	Rabbit
Reactivity	Human, Mouse, Rat
Conjugation	Unconjugated
Tested Applications	ELISA, IHC, WB
Storage	Store at -20°C for long term preservation (recommended). Store at 4°C for short term use.
Note	For research use only
Clonality	Recombinant
Uniprot ID	P78539
Expiration Date	12 months from date of receipt.



Western blot analysis of SK-N-SH cell ly...



Immunohistochemical analysis of formalin...