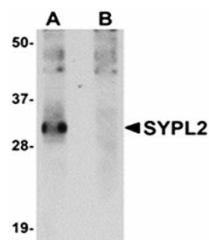


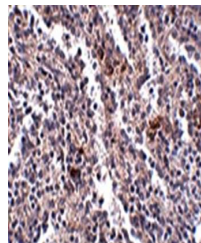
Product Datasheet

SYPL2 Antibody (orb75234)

Description	SYPL2 Antibody
Species/Host	Rabbit
Reactivity	Human, Mouse, Rat
Conjugation	Unconjugated
Tested Applications	ELISA, IHC, WB
Storage	Store at -20°C for long term preservation (recommended). Store at 4°C for short term use.
Note	For research use only
Clonality	Recombinant
Uniprot ID	Q5VXT5
Expiration Date	12 months from date of receipt.



Western blot analysis of human spleen ti...



Immunohistochemical analysis of formalin...