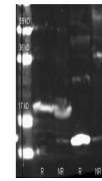


---

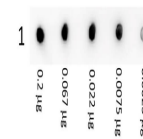
## Product Datasheet

### Streptavidin antibody (orb750607)

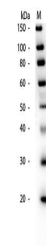
<b>Description</b>	Streptavidin antibody
<b>Species/Host</b>	Rabbit
<b>Reactivity</b>	Bacteria
<b>Conjugation</b>	Unconjugated
<b>Tested Applications</b>	DOT, ELISA, IHC, WB
<b>Immunogen</b>	Streptavidin (Streptomyces avidinii)
<b>Preservatives</b>	0.01% (w/v) Sodium Azide
<b>Form/Appearance</b>	Lyophilized
<b>Concentration</b>	70 mg/mL
<b>Storage</b>	Store vial at 4° C prior to restoration. For extended storage aliquot contents and freeze at -20° C or below. Avoid cycles of freezing and thawing. Centrifuge product if not completely clear after standing at room temperature. This product is stable for several weeks at 4° C as an undiluted liquid. Dilute only prior to immediate use.
<b>Note</b>	For research use only
<b>Application notes</b>	Anti-Streptavidin Antibody has been tested by ELISA, western blot, and dot blot and is suitable for immunoprecipitation and most immunological methods requiring high titer and specificity.
<b>Isotype</b>	Antiserum
<b>Clonality</b>	Polyclonal
<b>Purity</b>	Anti-STREPTAVIDIN antibody was prepared from monospecific antiserum by a delipidation and defibrination. Assay by immunoelectrophoresis resulted in a single precipitin arc against anti-rabbit serum, purified and partially purified Streptavidin. No cross reactivity occurs against Avidin.
<b>Dilution Range</b>	ELISA: 1:20,000-1:100,000, IHC: 1:1,000-1:5,000, WB: 1:2,000-1:10,000
<b>Expiration Date</b>	12 months from date of receipt.



Biorbyt Rabbit anti Streptavidin and Bio...



Dot Blot showing the detection of Strept...



Western Blot of Rabbit anti-Streptavidin...