
Product Datasheet

KT13 antibody (orb750596)

Description

KT13 antibody

Species/Host

Rabbit

Reactivity

Plant

Conjugation

Unconjugated

Tested

ELISA, IHC, WB

Applications
Immunogen

Trypsin Inhibitor [Soy Bean]

Preservatives

0.01% (w/v) Sodium Azide

Form/Appearance

Lyophilized

Concentration

85 mg/mL

Storage

Store vial at 4° C prior to restoration. For extended storage aliquot contents and freeze at -20° C or below. Avoid cycles of freezing and thawing. Centrifuge product if not completely clear after standing at room temperature. This product is stable for several weeks at 4° C as an undiluted liquid. Dilute only prior to immediate use.

Note

For research use only

Application notes

Anti-Trypsin Inhibitor has been tested by western blot and is suitable to be assayed against 1.0 ug of Trypsin Inhibitor [Lima Bean] in a standard ELISA using Peroxidase conjugated Affinity Purified anti-Rabbit IgG [H&L] (Goat) code #611-1302 and (ABTS (2,2'-azino-bis-[3-ethylbenthiiazoline-6-sulfonic acid]) code # ABTS-100 as a substrate for 30 minutes at room temperature. A working dilution of 1:200 to 1:1,000 of the reconstitution concentration is suggested for this product.

Isotype

Antiserum

Clonality

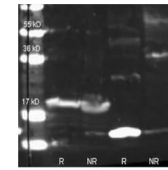
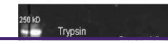
Polyclonal

Purity

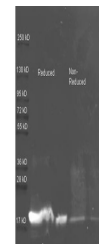
This product was prepared from monospecific antiserum by a delipidation and defibrination. Assay by immunoelectrophoresis resulted in a single precipitin arc against anti-rabbit serum, purified and partially purified Trypsin Inhibitor [Soy Bean]. Cross reactivity against Trypsin Inhibitor from other tissues and species may occur but have not been specifically determined.

Uniprot ID
P01070
NCBI
P01070.2
Dilution Range

ELISA: 1:3,000 - 1:15,000, IHC: User Optimized, WB: 1:500 - 1:2,000



Biorbyt Biotin conjugated Rabbit anti-trypsin inhibitor



Biorbyt Rabbit anti Soybean Trypsin Inhibitor