
Product Datasheet

env antibody (orb750559)

Description

env antibody

Species/Host

Rabbit

Reactivity

Virus

Conjugation

Unconjugated

Tested

ELISA, WB

Applications
Immunogen

MMTV was prepared from whole rabbit serum produced by repeated immunizations with a full length sequence for mouse mammary tumor virus surface protein tagged with His.

Preservatives

0.01% (w/v) Sodium Azide

Form/Appearance

Liquid (sterile filtered)

Concentration

66mg/mL

Storage

Store vial at -20° C or below prior to opening. This vial contains a relatively low volume of reagent (25 µL). To minimize loss of volume dilute 1:10 by adding 225 µL of the buffer stated above directly to the vial. Recap, mix thoroughly and briefly centrifuge to collect the volume at the bottom of the vial. Use this intermediate dilution when calculating final dilutions as recommended below. Store the vial at -20°C or below after dilution. Avoid cycles of freezing and thawing.

Note

For research use only

Application notes

Anti-MMTV Antibody has been tested for use in western blotting. Specific conditions for reactivity should be optimized by the end user. Expect band approximately 41.2 kDa in size corresponding to MMTV surface protein by western blotting in the appropriate cell lysate or extract.

Isotype

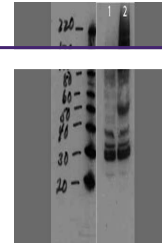
Antiserum

Clonality

Polyclonal

Purity

Mouse mammary tumor virus surface protein antibody was prepared from monospecific, delipidated and defibrinated antiserum, with addition of sodium azide to 0.01% and cross adsorbed with 6X HIS. A BLAST analysis was used to suggest cross-reactivity with MMTV from mouse based on a 100% homology with the immunizing sequence. Reactivity against homologues from other sources is not known.

Uniprot ID
[P03374](#)
NCBI
[M15122](#)


Western Blot of Rabbit anti-MMTV antibod...