

---

## Product Datasheet

**env antibody (orb750558)**

**Description**

env antibody

**Species/Host**

Rabbit

**Reactivity**

Virus

**Conjugation**

Unconjugated

**Tested**

ELISA, WB

**Applications**
**Immunogen**

MMTV was prepared from whole rabbit serum produced by repeated immunizations with a full length sequence for mouse mammary tumor virus surface protein tagged with His.

**Preservatives**

0.01% (w/v) Sodium Azide

**Form/Appearance**

Liquid (sterile filtered)

**Concentration**

66 mg/mL

**Storage**

Store vial at -20° C prior to opening. Aliquot contents and freeze at -20° C or below for extended storage. Avoid cycles of freezing and thawing. Centrifuge product if not completely clear after standing at room temperature. This product is stable for several weeks at 4° C as an undiluted liquid. Dilute only prior to immediate use.

**Note**

For research use only

**Application notes**

Anti-MMTV Antibody has been tested for use in western blotting. Specific conditions for reactivity should be optimized by the end user. Expect band approximately 41.2 kDa in size corresponding to MMTV surface protein by western blotting in the appropriate cell lysate or extract.

**Isotype**

Antiserum

**Clonality**

Polyclonal

**Purity**

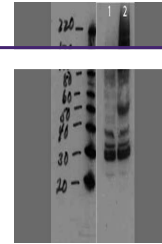
Mouse mammary tumor virus surface protein antibody was prepared from monospecific, delipidated and defibrinated antiserum, with addition of sodium azide to 0.01% and cross adsorbed with 6X HIS. A BLAST analysis was used to suggest cross-reactivity with MMTV from mouse based on a 100% homology with the immunizing sequence. Reactivity against homologues from other sources is not known.

**Uniprot ID**
**P03374**
**NCBI**
**M15122**
**Dilution Range**

ELISA: 1:10,000-1:20,000, WB: 1:1000-1:2000

**Expiration Date**

12 months from date of receipt.



Western Blot of Rabbit anti-MMTV antibod...