

---

## Product Datasheet

### KIF5B antibody (orb750523)

**Description**

KIF5B antibody

**Species/Host**

Rabbit

**Reactivity**

Human

**Conjugation**

Unconjugated

**Tested Applications**

ELISA, IHC, WB

**Immunogen**

Anti-Kinesin-1 was prepared from whole rabbit serum produced by repeated immunizations with a truncated kinesin-1 construct expressed in E. coli corresponding to human kinesin-1 protein.

**Preservatives**

0.01% (w/v) Sodium Azide

**Form/Appearance**

Liquid (sterile filtered)

**Concentration**

77 mg/mL

**Storage**

Store vial at -20° C or below prior to opening. This vial contains a relatively low volume of reagent (25 µL). To minimize loss of volume dilute 1:10 by adding 225 µL of the buffer stated above directly to the vial. Recap, mix thoroughly and briefly centrifuge to collect the volume at the bottom of the vial. Use this intermediate dilution when calculating final dilutions as recommended below. Store the vial at -20°C or below after dilution. Avoid cycles of freezing and thawing.

**Note**

For research use only

**Application notes**

Kinesin-1 antibody has been tested for use in SDS, western blot, and immunohistochemistry. For western blots expect a band of approximately 72 kDa in size corresponding to truncated kinesin-1 protein. Specific conditions for reactivity should be optimized by the end user.

**Isotype**

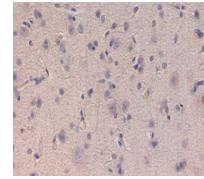
Antiserum

**Clonality**

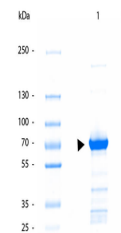
Polyclonal

**Purity**

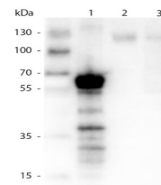
Anti-Kinesin-1 is directed against the human kinesin-1 protein. The product was prepared from monospecific antiserum by delipidation and defibrination. A BLAST analysis was used to suggest reactivity with human. Cross-reactivity with kinesin 1 from other sources have not been determined.

**Uniprot ID**
[P33176](#)
**NCBI**
[NP\\_004512.1](#)


Immunohistochemistry of Rabbit anti-Kine...



SDS-PAGE of Truncated Kinesin 1 Protein....



Western Blot of Rabbit anti-Kinesin 1 An...