

---

## Product Datasheet

### KIF5B antibody (orb750522)

**Description**

KIF5B antibody

**Species/Host**

Rabbit

**Reactivity**

Human

**Conjugation**

Unconjugated

**Tested Applications**

ELISA, IHC, WB

**Immunogen**

Anti-Kinesin-1 was prepared from whole rabbit serum produced by repeated immunizations with a truncated kinesin-1 construct expressed in E. coli corresponding to human kinesin-1 protein.

**Preservatives**

0.01% (w/v) Sodium Azide

**Form/Appearance**

Liquid (sterile filtered)

**Concentration**

77 mg/mL

**Storage**

Store vial at -20° C prior to opening. Aliquot contents and freeze at -20° C or below for extended storage. Avoid cycles of freezing and thawing. Centrifuge product if not completely clear after standing at room temperature. This product is stable for several weeks at 4° C as an undiluted liquid. Dilute only prior to immediate use.

**Note**

For research use only

**Application notes**

Kinesin-1 antibody has been tested for use in SDS, western blot, and immunohistochemistry. For western blots expect a band of approximately 72 kDa in size corresponding to truncated kinesin-1 protein. Specific conditions for reactivity should be optimized by the end user.

**Isotype**

Antiserum

**Clonality**

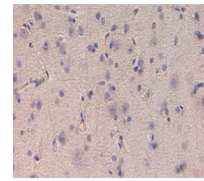
Polyclonal

**Purity**

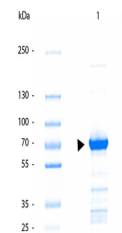
Anti-Kinesin-1 is directed against the human kinesin-1 protein. The product was prepared from monospecific antiserum by delipidation and defibrination. A BLAST analysis was used to suggest reactivity with human. Cross-reactivity with kinesin 1 from other sources have not been determined.

**Uniprot ID**
**P33176**
**NCBI**
**NP\_004512.1**
**Dilution Range**

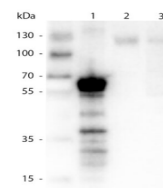
ELISA: 1:10000, IHC: User Optimized, WB: 1:100-1:500



Immunohistochemistry of Rabbit anti-Kine...



SDS-PAGE of Truncated Kinesin 1 Protein....



Western Blot of Rabbit anti-Kinesin 1 An...