

---

## Product Datasheet

### AHSP antibody (orb750520)

**Description**

AHSP antibody



**Species/Host**

Rabbit

**Reactivity**

Human, Mouse

**Conjugation**

Unconjugated

**Tested**

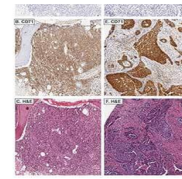
ELISA, IHC, WB

**Applications**

Immunohistochemistry of Rabbit anti-AHSP...

**Immunogen**

Anti-AHSP Antibody was produced from whole rabbit serum prepared by repeated immunizations with the full length human AHSP protein.



**Preservatives**

0.01% (w/v) Sodium Azide

**Form/Appearance**

Lyophilized

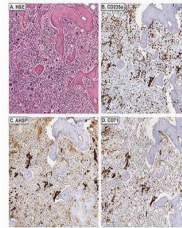
**Concentration**

115 mg/mL

**Storage**

Store vial at 4° C prior to restoration. For extended storage aliquot contents and freeze at -20° C or below. Avoid cycles of freezing and thawing. Centrifuge product if not completely clear after standing at room temperature. This product is stable for several weeks at 4° C as an undiluted liquid. Dilute only prior to immediate use.

Immunohistochemistry of Rabbit anti-AHSP...



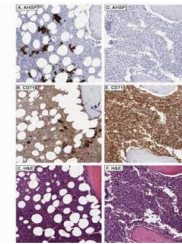
**Note**

For research use only

**Application notes**

Anti-AHSP Antibody has been tested in western blot and immunohistochemistry and is suitable for immunofluorescence microscopy using paraformaldehyde-fixed primary cardiomyocyte cultures and ELISA. Specific conditions for reactivity should be optimized by the end user.

Immunohistochemistry of Rabbit anti-AHSP...



**Isotype**

Antiserum

**Clonality**

Polyclonal

**Purity**

Anti-AHSP Antibody is directed against the human AHSP protein. The product was prepared from monospecific antiserum by delipidation and defibrination. A BLAST analysis was used to suggest cross reactivity with human and mouse. Cross-reactivity with AHSP from other sources have not been determined.

**Uniprot ID**

[Q9NZD4](#)

**NCBI**

[NP\\_057717.1](#)

**Dilution Range**

ELISA: 1:2,000 - 1:10,000, IHC: 1:8000, WB: 1:500-1:1000