

Product Datasheet

BirA antibody (orb750518)

Description

BirA antibody

Species/Host

Rabbit

Conjugation

Unconjugated

Tested Applications

ELISA, WB

Immunogen

Anti-Biotin Ligase Epitope Tag antibody was prepared from whole rabbit serum produced by repeated immunizations with a synthetic avi-tag peptide GLNDIFEAQKIEWH (minimal BirA substrate; biotin is added to the sequence at the lysine).

Preservatives

0.01% (w/v) Sodium Azide

Form/Appearance

Liquid (sterile filtered)

Concentration

70 mg/ml

Storage

Store vial at -20° C prior to opening. Aliquot contents and freeze at -20° C or below for extended storage. Avoid cycles of freezing and thawing. Centrifuge product if not completely clear after standing at room temperature. This product is stable for several weeks at 4° C as an undiluted liquid. Dilute only prior to immediate use.

Note

For research use only

Application notes

Anti-Biotin Ligase Epitope Tag Antibody has been tested in ELISA and Western Blot. Western blot analysis of *B. subtilis* strains producing either (BAP-tagged) SPoIIIAH (XWB49) or (BAP-tagged) SpolIQ (XWB46) showed strong and specific reactivity to the antisera. Minor background bands of unknown identity may be observed. The antisera will recognize the BAP/BLT tag irrespective of the whether the tag is biotinylated (data not shown).

Isotype

Antiserum

Clonality

Polyclonal

Purity

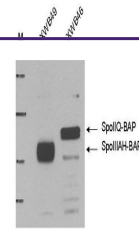
This antiserum detects the minimal peptide substrate (GLNDIFEAQKIEWH) for the *E. coli* biotin ligase tag (BLT of BirA). Western blot analysis of *B. subtilis* strains producing either (BAP-tagged) SPoIIIAH (XWB49) or (BAP-tagged) SpolIQ (XWB46) showed strong and specific reactivity to the antisera. Minor background bands of unknown identity may be observed. The antisera will recognize the BAP/BLT tag irrespective of the whether the tag is biotinylated (data not shown).

Dilution Range

ELISA: 1:5,000, WB: 1:5,000

Expiration Date

12 months from date of receipt.



Western blot using Biorbyt's Anti-Biotin...