
Product Datasheet

Sephs1 antibody (orb750515)

Description

Sephs1 antibody

Species/Host

Rabbit

Reactivity

Mouse

Conjugation

Unconjugated

Tested

ELISA, IP, WB

Applications
Immunogen

This antibody was prepared from whole rabbit serum produced by repeated immunizations with a full-length recombinant protein corresponding to mouse SPS1.

Preservatives

0.01% (w/v) Sodium Azide

Form/Appearance

Lyophilized

Concentration

85 mg/mL

Storage

Store vial at 4° C prior to restoration. For extended storage aliquot contents and freeze at -20° C or below. Avoid cycles of freezing and thawing. Centrifuge product if not completely clear after standing at room temperature. This product is stable for several weeks at 4° C as an undiluted liquid. Dilute only prior to immediate use.

Note

For research use only

Application notes

This antibody has been tested for use in ELISA and western blotting. Specific conditions for reactivity should be optimized by the end user. Expect a band approximately 43 kDa in size corresponding to SPS1 by western blotting in the appropriate cell lysate or extract.

Isotype

Antiserum

Clonality

Polyclonal

Purity

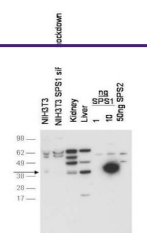
This antibody is directed against mouse SPS1. The product is delipidated and defibrinated antiserum. A BLAST analysis was used to suggest cross-reactivity with SPS1 from mouse, human and rat based on a 100% homology with the immunizing sequence. Reactivity against homologues from other sources is not known.

Uniprot ID
[Q8BH69](#)
NCBI
[AAH66037.1](#)
Dilution Range

ELISA: 1:5,000 - 1:20,000, IP: 1:100, WB: 1:500 - 1:2,000

Expiration Date

12 months from date of receipt.



Western blot using Biorbyt's anti-SPS1 a...