
Product Datasheet

CUL4A antibody (orb750500)

Description

CUL4A antibody

Species/Host

Rabbit

Reactivity

Human

Conjugation

Unconjugated

Tested

ELISA, IHC, IP, WB

Applications
Immunogen

This antibody was prepared from whole rabbit serum produced by repeated immunizations with a synthetic peptide corresponding to the N-Terminal region near amino acids 1-25 of Human Cul4A coupled to KLH.

Preservatives

0.01% (w/v) Sodium Azide

Form/Appearance

Liquid (sterile filtered)

Concentration

85 mg/mL

Storage

Store vial at -20° C prior to opening. Aliquot contents and freeze at -20° C or below for extended storage. Avoid cycles of freezing and thawing. Centrifuge product if not completely clear after standing at room temperature. This product is stable for several weeks at 4° C as an undiluted liquid. Dilute only prior to immediate use.

Note

For research use only

Application notes

Anti-Cul4A has been tested by western blot, immunoprecipitation, and immunohistochemistry. The antibody immunoprecipitates protein from cell lysates (using HeLa, U2OS and others). This antibody also co-immunoprecipitates at least 8 subunits of COP9, DDB1 and CAND1. An 87.6 kDa band corresponding to human Cul4A is detected. Most cell lines expressing Cul4A can be used as a positive control. Researchers should determine optimal titers for other applications.

Isotype

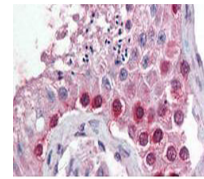
Antiserum

Clonality

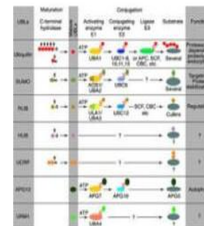
Polyclonal

Purity

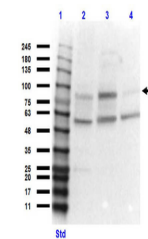
This product is monospecific antiserum processed by delipidation and defibrination followed by sterile filtration. This product reacts with human Cullin 4A. Cross reactivity is expected against mouse Cul4A based on a high degree of sequence homology. Cross reactivity with other human cullins may occur.

Uniprot ID
[Q13619](https://www.uniprot.org/entry/Q13619)


Immunohistochemistry.
Biorbyt's anti-CUL...



Most modifiers mature
by proteolytic pro...



Western Blot of Rabbit
Anti-Cul4 Antibod...