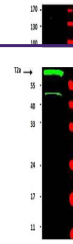


## Product Datasheet

### CCNT2 antibody (orb750494)

<b>Description</b>	CCNT2 antibody
<b>Species/Host</b>	Rabbit
<b>Reactivity</b>	Human
<b>Conjugation</b>	Unconjugated
<b>Tested Applications</b>	ELISA, IP, WB
<b>Immunogen</b>	This antibody was prepared from whole rabbit serum produced by repeated immunizations with a recombinant protein corresponding to amino acids 1-584 of human Cyclin T2a protein.
<b>Preservatives</b>	0.01% (w/v) Sodium Azide
<b>Form/Appearance</b>	Liquid (sterile filtered)
<b>Concentration</b>	85 mg/mL
<b>Storage</b>	Store vial at -20° C prior to opening. Aliquot contents and freeze at -20° C or below for extended storage. Avoid cycles of freezing and thawing. Centrifuge product if not completely clear after standing at room temperature. This product is stable for several weeks at 4° C as an undiluted liquid. Dilute only prior to immediate use.
<b>Note</b>	For research use only
<b>Application notes</b>	This antibody has been tested for use in ELISA and western blot. Specific conditions for reactivity should be optimized by the end user. Expect bands approximately 74 and 81 kDa in size corresponding to isoforms of Cyclin T2 protein by western blotting in the appropriate tissue or cell lysate or extract.
<b>Isotype</b>	Antiserum
<b>Clonality</b>	Polyclonal
<b>Purity</b>	This antibody is directed against human Cyclin T2 proteins and was prepared from monospecific antiserum by delipidation and defibrination. Antiserum will specifically react with proteins 74 and 81 kDa in size corresponding to isoforms of Cyclin T2 protein by western blot. A protein:protein BLAST analysis was used to suggest cross reactivity with Cyclin T2a and T2b from dog (96%), bovine (93%), mouse (88%) and rat (85%) sources based on high homology with the full length protein. Reactivity against homologues from other sources is not known.
<b>Uniprot ID</b>	<b>O60583</b>



Western blot using Biorbyt's Anti-Cyclin...