

---

## Product Datasheet

### Angpt1 antibody (orb750479)

**Description**

Angpt1 antibody

**Species/Host**

Rabbit

**Reactivity**

Human, Mouse

**Conjugation**

Unconjugated

**Tested**

ELISA, IF, IHC, WB

**Applications**
**Immunogen**

This whole rabbit serum was prepared by repeated immunizations with a synthetic peptide corresponding to a N-terminus region near aa 15-45 of mouse angiopoietin 1 protein conjugated to KLH using maleimide. A residue of cysteine was added to the amino terminal end to facilitate coupling.

**Preservatives**

0.01% (w/v) Sodium Azide

**Form/Appearance**

Liquid (sterile filtered)

**Concentration**

80 mg/ml

**Storage**

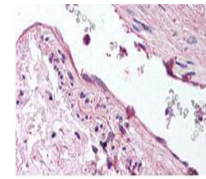
Store vial at -20° C or below prior to opening. This vial contains a relatively low volume of reagent (25 µL). To minimize loss of volume dilute 1:10 by adding 225 µL of the buffer stated above directly to the vial. Recap, mix thoroughly and briefly centrifuge to collect the volume at the bottom of the vial. Use this intermediate dilution when calculating final dilutions as recommended below. Store the vial at -20°C or below after dilution. Avoid cycles of freezing and thawing.

**Note**

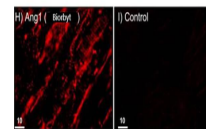
For research use only

**Application notes**

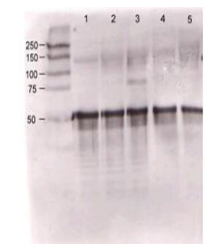
Anti-Angiopoietin-1 Antiserum has been tested in ELISA, western blot, immunohistochemistry, and immunofluorescence and is suitable for other antibody based assays. A 1:500 dilution is recommended for western blotting. The reaction of this antiserum directly with cell supernatants may result in high background due to reactivity of components in the serum. This can be alleviated by first immunoprecipitating the antibody:antigen complex and then detecting the antigen. This method results in a very clean and strong signal. Both Ang-1 and Ang-2 proteins have predicted molecular weights of approximately 57 kDa and appear on western blots close to their predicted molecular weights. In some instances additional bands may be seen at approximately 75 kDa which represent highly glycosylated forms of the protein that migrate at a higher apparent molecular weight.



Biorbyt's anti-ANG1 antibody was diluted...



Immunofluorescence and confocal imaging ...



Rabbit anti-Ang-1 was used at a 1:500 di...