
Product Datasheet

BIVM antibody (orb750471)

Description

BIVM antibody

Species/Host

Rabbit

Reactivity

Human

Conjugation

Unconjugated

Tested

ELISA, WB

Applications
Immunogen

BIVM peptide corresponding to a region near carboxy terminus of the human protein conjugated to Keyhole Limpet Hemocyanin (KLH).

Preservatives

0.01% (w/v) Sodium Azide

Form/Appearance

Liquid (sterile filtered)

Concentration

90 mg/mL

Storage

Store vial at -20° C prior to opening. Aliquot contents and freeze at -20° C or below for extended storage. Avoid cycles of freezing and thawing. Centrifuge product if not completely clear after standing at room temperature. This product is stable for several weeks at 4° C as an undiluted liquid. Dilute only prior to immediate use.

Note

For research use only

Application notes

This polyclonal antibody reacts human BIVM at the C-terminal region and is useful for detection of BIVM by ELISA or western blotting. For immunoblotting a 57 kDa band corresponding to human BIVM is detected. Unstimulated HeLa cells can be used as a positive control. Although not tested, this antibody is likely functional in immunohistochemistry and immunoprecipitation.

Isotype

Antiserum

Clonality

Polyclonal

Purity

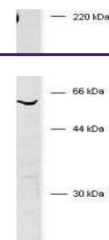
This product was prepared from monospecific antiserum by delipidation and defibrination. This polyclonal antibody reacts with BIVM. This conserved protein is present in many tissues and organisms and therefore cross-reactivity with BIVM from other sources is likely but has not been determined.

Uniprot ID
[Q86UB2](#)
NCBI
[NP_001153068.1](#)
Dilution Range

ELISA: 1:5,000 - 1:25,000, WB: 1:1,000

Expiration Date

12 months from date of receipt.



Western blot of anti-human BIVM. Whole C...