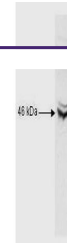

Product Datasheet

CREB1 antibody (orb750462)

Description	CREB1 antibody
Species/Host	Rabbit
Reactivity	Human, Mouse, Rat
Conjugation	Unconjugated
Tested Applications	ELISA, Gel Supershift Assays, WB
Immunogen	CREB-1 (p43) peptide corresponding to a region near the N-terminus of the human protein, conjugated to Keyhole Limpet Hemocyanin (KLH).
Preservatives	0.01% (w/v) Sodium Azide
Form/Appearance	Liquid (sterile filtered)
Concentration	2.56 mg/ml
Storage	Store vial at -20° C prior to opening. Aliquot contents and freeze at -20° C or below for extended storage. Avoid cycles of freezing and thawing. Centrifuge product if not completely clear after standing at room temperature. This product is stable for several weeks at 4° C as an undiluted liquid. Dilute only prior to immediate use.
Note	For research use only
Application notes	Anti-CREB-1 Antibody has been tested in western blot and is suitable for use in SDS, Western Blot, and ELISA assays. Specific conditions for reactivity should be optimized by the end user.
Isotype	Antiserum
Clonality	Polyclonal
Purity	Anti-CREB-1 was prepared from monospecific antiserum by delipidation and immunoabsorption against an E.coli lysate immobilized on agarose beads. Anti-CREB-1 (p43) may react non-specifically with other proteins. A partial cross-reactivity is observed against CREM-1 protein.
Uniprot ID	P16220
NCBI	CAG28545.1
Dilution Range	ELISA: 1:5,000 - 1:25,000, Gel Supershift Assays: 0.5 to 1.0 uL per assay, WB: 1:500 - 1:1,000
Expiration Date	12 months from date of receipt.



Anti-CREB is shown to detect CREB-1 pres...