

---

## Product Datasheet

### RBL2 antibody (orb750457)

**Description**

RbL2 antibody

**Species/Host**

Rabbit

**Reactivity**

Mouse

**Conjugation**

Unconjugated

**Tested Applications**

ELISA, IHC, IP, WB

**Immunogen**

Rb2 (p130) peptide corresponding to a region near the C-terminus of the human protein conjugated to Keyhole Limpet Hemocyanin (KLH).

**Preservatives**

0.01% (w/v) Sodium Azide

**Form/Appearance**

Liquid (sterile filtered)

**Concentration**

85 mg/mL

**Storage**

Store vial at -20° C prior to opening. Aliquot contents and freeze at -20° C or below for extended storage. Avoid cycles of freezing and thawing. Centrifuge product if not completely clear after standing at room temperature. This product is stable for several weeks at 4° C as an undiluted liquid. Dilute only prior to immediate use.

**Note**

For research use only

**Application notes**

Anti-p130 has been tested by western blot and immunohistochemistry and is suitable for ELISA, immunoprecipitation, immunoblotting, immunohistochemistry, and other immunological methods requiring high titer and specificity.

**Isotype**

Antiserum

**Clonality**

Polyclonal

**Purity**

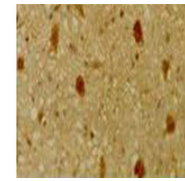
This product was prepared from monospecific antiserum by delipidation and defibrination. Antiserum will specifically react with a 130 kDa Rb2 protein from human, rat and mouse tissue. No reaction was observed against other related tumor suppressor proteins. Cross reactivity with Rb2 (p130) from other species may also occur.

**Uniprot ID**
**Q08999**
**NCBI**
**172072597**
**Dilution Range**

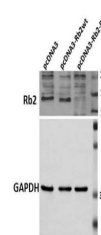
ELISA: 1:5,000 - 1:20,000, IHC: 1:200 - 1:1,000, IP: 1:100, WB: 1:500 - 1:2,000

**Expiration Date**

12 months from date of receipt



Immunohistochemical staining of mouse ti...



Western Blot of Rabbit Anti-Rb2 p130 Ant...