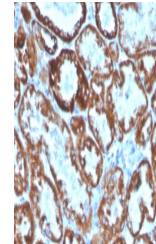


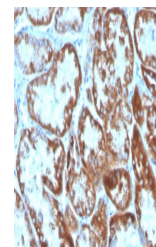
Product Datasheet

CD137L antibody (Biotin) (orb750323)

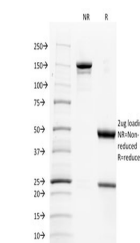
Description	Mouse monoclonal antibody against CD137L conjugated to Biotin
Species/Host	Mouse
Reactivity	Human
Conjugation	Biotin
Tested Applications	FACS, IHC-P
Immunogen	Recombinant full-length human CD137L protein was used as the immunogen for the CD137L antibody.
Preservatives	0.1 mg/ml with 0.1 mg/ml rAlbumin (US sourced), 0.05% sodium azide
Storage	Store the CD137L antibody at 2-8°C (up to one month) or aliquot and store at -20°C (longer term).
Note	For research use only
Application notes	Optimal dilution of the CD137L antibody should be determined by the researcher.
Formula	0.1 mg/ml with 0.1 mg/ml BSA (US sourced), 0.05% sodium azide
Isotype	Mouse IgG2a, kappa
Clonality	Monoclonal
Purity	Protein G affinity chromatography
Uniprot ID	P41273
Hazard Information	This CD137L antibody is available for research use only.
Dilution Range	Flow cytometry: 2-4ug/million cells in 0.1ml, Immunohistochemistry (FFPE): 2-4ug/ml for 30 minutes at RT
Expiration Date	12 months from date of receipt.



IHC staining of FFPE human kidney with C...



IHC staining of FFPE human kidney with C...



SDS-PAGE analysis of purified, BSA-free ...