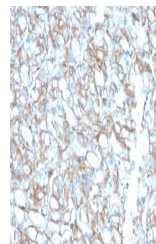


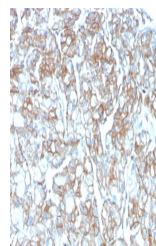
Product Datasheet

PD-L1 antibody (Biotin) (orb750313)

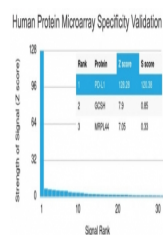
Description	Mouse monoclonal antibody against PD-L1 conjugated to Biotin
Species/Host	Mouse
Reactivity	Human
Conjugation	Biotin
Tested Applications	FACS, IF, IHC-P, WB
Immunogen	A portion of amino acids 39-191 from the human protein was used as the immunogen for the PD-L1 antibody.
Preservatives	0.1 mg/ml with 0.1 mg/ml rAlbumin (US sourced), 0.05% sodium azide
Storage	Store the PD-L1 antibody at 2-8°C (up to one month) or aliquot and store at -20°C (longer term).
Note	For research use only
Application notes	Optimal dilution of the PD-L1 antibody should be determined by the researcher.
Formula	0.1 mg/ml with 0.1 mg/ml BSA (US sourced), 0.05% sodium azide
Isotype	Mouse IgG2b, kappa
Clonality	Monoclonal
Purity	Protein G affinity chromatography
Uniprot ID	Q9NZQ7
Hazard Information	This PD-L1 antibody is available for research use only.
Dilution Range	Flow cytometry: 1-2ug/million cells, Immunofluorescence: 1-2ug/ml, Western blot: 1-2ug/ml, Immunohistochemistry (FFPE): 1-2ug/ml at RT
Expiration Date	12 months from date of receipt.



IHC testing of FFPE lung carcinoma with ...



IHC testing of FFPE lung carcinoma with ...



Analysis of HuProt (TM) microarray conta...