
Product Datasheet

Cadherin 16 antibody (Biotin) (orb750308)

Description

Mouse monoclonal antibody against Cadherin 16

Species/Host

Mouse

Reactivity

Human

Conjugation

Biotin

Tested Applications

ELISA, IHC-P, WB

Immunogen

A portion of amino acids 371-507 from the human protein was used as the immunogen for the CDH16 antibody.

Preservatives

0.1 mg/ml with 0.1 mg/ml rAlbumin (US sourced), 0.05% sodium azide

Storage

Store the CDH16 antibody at 2-8°C (up to one month) or aliquot and store at -20°C (longer term).

Note

For research use only

Application notes

Optimal dilution of the CDH16 antibody should be determined by the researcher.

Formula

0.1 mg/ml with 0.1 mg/ml BSA (US sourced), 0.05% sodium azide

Isotype

Mouse IgG1, kappa

Clonality

Monoclonal

Purity

Protein G affinity chromatography

Uniprot ID
075309
Hazard Information

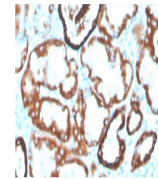
This CDH16 antibody is available for research use only.

Dilution Range

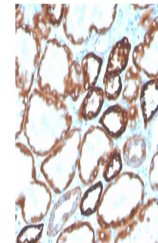
ELISA: order unconjugated format for coating, Western blot: 2-4ug/ml, Immunohistochemistry (FFPE): 2-4ug/ml for 30 minutes at RT

Expiration Date

12 months from date of receipt.

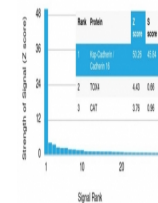


IHC testing of FFPE human kidney with biotinylated antibody



IHC testing of FFPE human kidney with biotinylated antibody

Human Protein Microarray Specificity Validation



Analysis of HuProt (TM) microarray containing CDH16