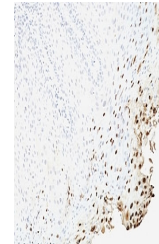


Product Datasheet

HPV-16 L1 Antibody (orb750293)

Description	Reacts with a protein of 57kDa, identified as the L1 protein of human papilloma virus type 16 (HPV-1...
Species/Host	Mouse
Reactivity	Virus
Conjugation	Unconjugated
Tested Applications	IHC-P
Immunogen	Human papilloma virus type 16, major capsid protein L1 was used as the immunogen for this anti-L1 antibody.
Preservatives	0.2 mg/ml in 1X PBS with 0.1 mg/ml rAlbumin (US sourced) and 0.05% sodium azide
Storage	Store the anti-L1 antibody at 2-8°C (with azide) or aliquot and store at -20°C or colder (without azide).
Note	For research use only
Application notes	Optimal dilution of the antibody should be determined by the researcher.
Formula	0.2 mg/ml in 1X PBS with 0.1 mg/ml BSA (US sourced) and 0.05% sodium azide
Isotype	Mouse IgG2a, kappa
Clonality	Monoclonal
Purity	Protein G affinity chromatography
Uniprot ID	Not Applicable
Hazard Information	This anti-L1 antibody is available for research use only.
Dilution Range	Immunohistochemistry (FFPE): 1-2ug/ml for 30 min at RT
Expiration Date	12 months from date of receipt.



IHC:
Formalin-fixed,
paraffin-embedded
h...