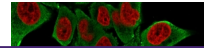

Product Datasheet

**Alpha Actin Antibody / ACTA2 (smooth muscle)
(orb750255)**

Description

Actin is a major component of the cytoskeleton



highly...

Species/Host

Mouse

Reactivity

Human

Conjugation

Unconjugated

Tested Applications

IF, IHC-P

Immunofluorescent staining of fixed huma...

Immunogen

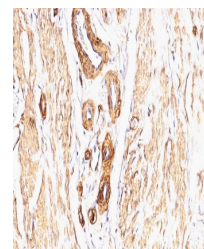
A 10 amino acid peptide from the alpha smooth muscle isoform of actin was used as the immunogen for this Smooth Muscle Actin antibody.

Preservatives

0.2 mg/ml in 1X PBS with 0.1 mg/ml rAlbumin (US sourced) and 0.05% sodium azide

Storage

Store the Smooth Muscle Actin antibody at 2-8°C (with azide) or aliquot and store at -20°C or colder (without azide).



IHC: Formalin-fixed, paraffin-embedded L...

Note

For research use only

Application notes

Optimal dilution of the antibody should be determined by the researcher.

Formula

0.2 mg/ml in 1X PBS with 0.1 mg/ml BSA (US sourced) and 0.05% sodium azide

Isotype

Mouse IgG2a, kappa

Clonality

Monoclonal

Purity

Protein G affinity chromatography

Uniprot ID

P62736

Hazard Information

This Smooth Muscle Actin antibody is available for research use only.

Dilution Range

Immunofluorescence: 1-2ug/ml, Immunohistochemistry (FFPE): 1-2ug/ml for 30 min at RT

Expiration Date

12 months from date of receipt.