

---

## Product Datasheet

### **RBP Antibody / Retinol Binding Protein 1 (orb750251)**

**Description**

Recognizes a protein of 21kDa-25kDa, identified as


**Species/Host**

Mouse

**Reactivity**

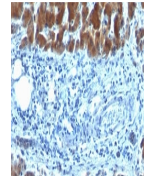
Human

**Conjugation**

Unconjugated

**Tested Applications**

IHC-P



IHC:  
Formalin-fixed,  
paraffin-embedded  
h...

**Immunogen**

Retinol binding protein purified from human plasma was used as the immunogen for this RBP antibody. Its epitope localizes between amino acids 74-182 of human RBP.

**Preservatives**

0.2 mg/ml in 1X PBS with 0.1 mg/ml rAlbumin (US sourced) and 0.05% sodium azide

**Storage**

Store the RBP antibody at 2-8°C (with azide) or aliquot and store at -20°C or colder (without azide).

**Note**

For research use only

**Application notes**

Optimal dilution of the antibody should be determined by the researcher.

**Formula**

0.2 mg/ml in 1X PBS with 0.1 mg/ml BSA (US sourced) and 0.05% sodium azide

**Isotype**

Mouse IgG1, kappa

**Clonality**

Monoclonal

**Purity**

Protein G affinity chromatography

**Uniprot ID**

**P09455, P02753, P50120**

**Hazard Information**

This RBP antibody is available for research use only.

**Dilution Range**

Immunohistochemistry (FFPE): 1-2ug/ml for 30 min at RT

**Expiration Date**

12 months from date of receipt.