

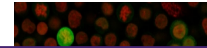
---

## Product Datasheet

### Bax Antibody (orb750250)

**Description**

Recognizes a protein of 21kDa, identified as the Bax


**Species/Host**

Mouse

**Reactivity**

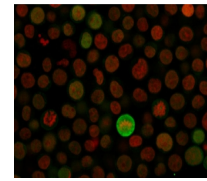
Human

**Conjugation**

Unconjugated

**Tested Applications**

FACS, IF, IHC-P, WB



Immunofluorescent staining of fixed huma...

**Immunogen**

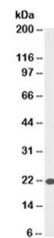
Amino acids 3-16 (GSGEQPRGGGPTSS) from the human protein were used as the immunogen for this anti-Bax antibody.

**Preservatives**

0.2 mg/ml in 1X PBS with 0.1 mg/ml rAlbumin (US sourced) and 0.05% sodium azide

**Storage**

Store the anti-Bax antibody at 2-8°C (with azide) or aliquot and store at -20°C or colder (without azide).



Western blot testing of HeLa cell lysate...

**Note**

For research use only

**Application notes**

Optimal dilution of the antibody should be determined by the researcher.

**Formula**

0.2 mg/ml in 1X PBS with 0.1 mg/ml BSA (US sourced) and 0.05% sodium azide

**Isotype**

Mouse IgG1, kappa

**Clonality**

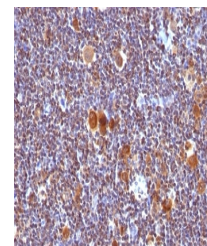
Monoclonal

**Purity**

Protein G affinity chromatography

**Uniprot ID**

[Q07812](#)



IHC analysis of formalin-fixed, paraffin...

**Hazard Information**

This anti-Bax antibody is available for research use only.

**Dilution Range**

Western blot: 1-2ug/ml, Flow cytometry: 1-2ug/million cells, Immunofluorescence: 1-2ug/ml, Immunohistochemistry (FFPE): 1-2ug/ml for 30 min at RT

**Expiration Date**

12 months from date of receipt.