

---

## Product Datasheet

**Cytokeratin 14 Antibody / CK14 / KRT14  
(orb750237)**

**Description**

Cytokeratin 14 (CK14) belongs to the type I (or A or


**Species/Host**

Mouse

**Reactivity**

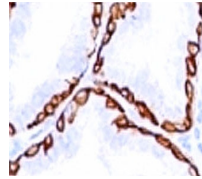
Human

**Conjugation**

Unconjugated

**Tested Applications**

IF, IHC-P



IHC: Formalin-fixed, paraffin-embedded h...

**Immunogen**

A 15 amino acid peptide from the C-terminus of human keratin 14 was used as the immunogen for this anti-Cytokeratin 14 antibody.

**Preservatives**

0.2 mg/ml in 1X PBS with 0.1 mg/ml rAlbumin (US sourced) and 0.05% sodium azide

**Storage**

Store the anti-Cytokeratin 14 antibody at 2-8°C (with azide) or aliquot and store at -20°C or colder (without azide).



IHC: Formalin-fixed, paraffin-embedded h...

**Note**

For research use only

**Application notes**

Optimal dilution of the antibody should be determined by the researcher.

**Formula**

0.2 mg/ml in 1X PBS with 0.1 mg/ml BSA (US sourced) and 0.05% sodium azide

**Isotype**

Mouse IgG3, kappa

**Clonality**

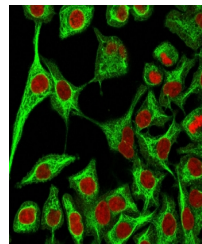
Monoclonal

**Purity**

Protein G affinity chromatography

**Uniprot ID**

**P02533**



Immunofluorescent staining of fixed huma...

**Hazard Information**

This anti-Cytokeratin 14 antibody is available for research use only.

**Dilution Range**

Immunofluorescence: 1-2ug/ml, Immunohistochemistry (FFPE): 1-2ug/ml for 30 min at RT

**Expiration Date**

12 months from date of receipt.